

# MIG/MAG fume extraction torches "RAB GRIP"

## Air and liquid cooled

Every welding job generates fumes and smoke that could be hazardous if inhaled. Based on the well-established torch series "MB" the RAB GRIP Fume Extraction Torches offer efficient fume extraction through the torch itself. Special design solutions guarantee highly efficient smoke removal directly at its source without affecting the protective gas shield.

- Direct extraction at the arc – ensures protection of the welder's respiratory system
- Problem free installation in all existing MIG/MAG work stations
- Small extraction tube diameter – better accessibility
- Aluminium extraction tube – considerable weight saving



- Handle with extraction control and swivel joint – optimized handling
- Smaller diameter extraction hoses for all types – lower handling weight, optimum flexibility
- Considerable weight reduction of air cooled torches due to the innovative ABICOR BINZEL Low-Weight Bikox®



Suction nozzle with spring clip, feed air slide below\*

Torch complete Type	Connection	Part-No.		
		3 m	4 m	5 m
RAB GRIP 15 AK	Central connection KZ-2	602.3001.1	602.3002.1	602.3003.1
RAB GRIP 24 KD	Central connection KZ-2	612.3001.1	612.3002.1	612.3003.1
RAB GRIP 25 AK	Central connection KZ-2	604.3001.1	604.3002.1	604.3003.1
RAB GRIP 36 KD	Central connection KZ-2	614.3001.1	614.3002.1	614.3003.1
RAB GRIP 240 D	Central connection WZ-2	623.3003.1	623.3004.1	623.3005.1
RAB GRIP 501	Central connection WZ-2	632.3003.1	632.3004.1	632.3005.1
RAB GRIP 501 D	Central connection WZ-2	634.3003.1	634.3004.1	634.3005.1

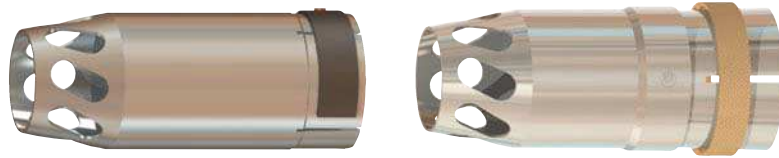
\*Module solutions on demand.



Suction nozzle with Quicklock, feed air slide on top

Torch complete Type	Connection	Part-No.		
		3 m	4 m	5 m
RAB GRIP 15 AK	Central connection KZ-2	602.3008.1	602.3009.1	602.3010.1
RAB GRIP 24 KD	Central connection KZ-2	612.3007.1	612.3008.1	612.3009.1
RAB GRIP 25 AK	Central connection KZ-2	604.3007.1	604.3008.1	604.3009.1
RAB GRIP 36 KD	Central connection KZ-2	614.3007.1	614.3008.1	614.3009.1
RAB GRIP 240 D	Central connection WZ-2	623.3011.1	623.3012.1	623.3013.1
RAB GRIP 501	Central connection WZ-2	632.3015.1	632.3016.1	632.3017.1
RAB GRIP 501 D	Central connection WZ-2	634.3030.1	634.3031.1	634.3032.1

## RAB GRIP specific wear parts



Type	Suction nozzle spring clip	Suction nozzle Quicklock
RAB GRIP 15 AK	600.2047.1	600.3017.1
RAB GRIP 24 KD	600.2045.1	600.3018.1
RAB GRIP 25 AK	600.2046.1	600.3019.1
RAB GRIP 36 KD	600.2044.1	600.3009.1
RAB GRIP 240 D	600.2045.1	600.3018.1
RAB GRIP 501	600.2044.1	600.3009.1
RAB GRIP 501 D	600.2044.1	600.3009.1

Replacement spring clip for the fixation of the suction nozzle on request.  
Suction funnel (replaces the suction nozzle) on request.

Type	Swan neck	Outer neck	Gas nozzle holder
RAB GRIP 15 AK	602.3004.1	600.3007.1	902.0007
RAB GRIP 24 KD	612.2001	600.2002	-
RAB GRIP 25 AK	604.2001	600.3007.1	-
RAB GRIP 36 KD	614.2001	600.2002	-
RAB GRIP 240 D	623.3001.1	600.2002	-
RAB GRIP 501	632.3001.1	632.2009	-
RAB GRIP 501 D	634.3001.1	600.2002	-

The wear parts – contact tip, gas nozzle, gas diffuser, contact tip holder, neck liner or liner – are identical with those of the manual welding torches of same size.

## Technical Data

Type	Cooling	Rating		Duty cycle (%)	Wire size (mm)
		CO <sub>2</sub>	Mixed gas M21		
RAB GRIP 15 AK	air	180 A	150 A	60	0.6–1.0
RAB GRIP 24 KD	air	250 A	220 A	60	0.8–1.2
RAB GRIP 25 AK	air	230 A	200 A	60	0.8–1.2
RAB GRIP 36 KD	air	300 A	270 A	60	0.8–1.2
RAB GRIP 240 D	liquid	300 A	270 A	100	0.8–1.2
RAB GRIP 501	liquid	550 A	500 A	100	1.0–1.6
RAB GRIP 501 D	liquid	500 A	450 A	100	1.0–1.6

### Note for liquid cooled torches:

To protect cable assembly components from excessive heat build up we recommend a post welding cooling cycle of at least four minutes.

## MIG/MAG Fume Extraction Torches in action ...



MIG/MAG **without** fume extraction



RAB GRIP **with** fume extraction